



# GMT MONTHLY MEMBERSHIP PROGRESS REPORT

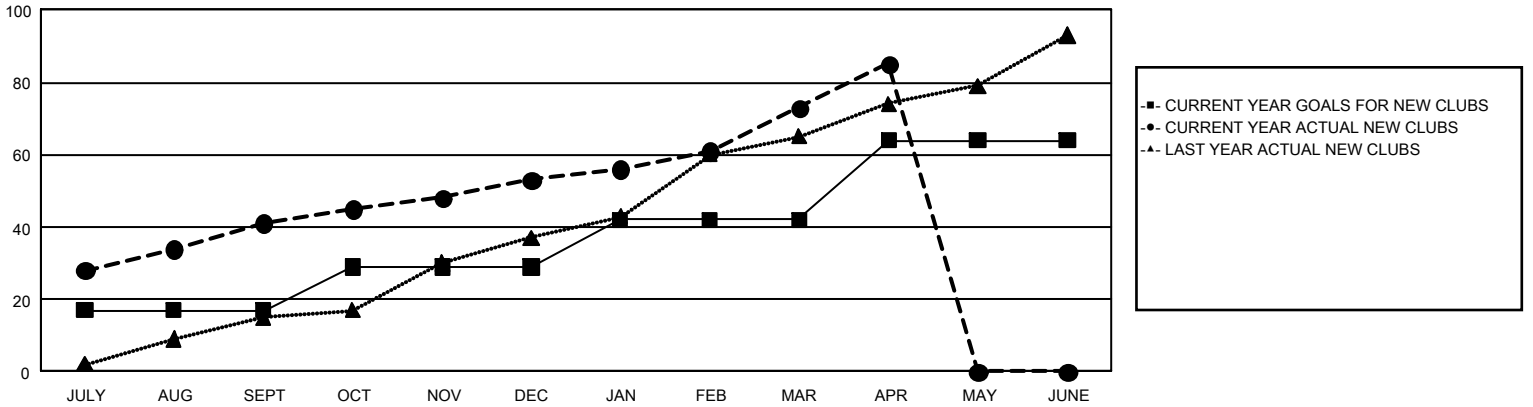
## GAT Constitutional Area 7

Results as of: 4/30/2026

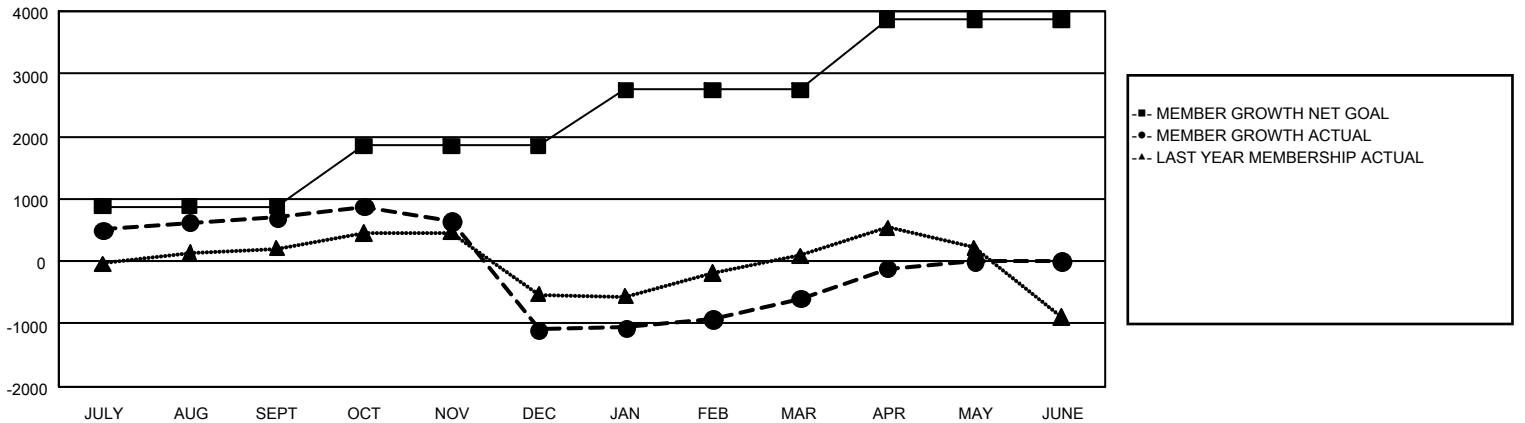
REPORT DOES NOT INCLUDE CLUBS IN UNDISTRICTED AREAS.

Clubs				Members			
RESULTS FOR 2025-2026				RESULTS FOR 2025-2026			
QUARTER	NEW CLUB GOAL	NEW CLUBS	DROPPED CLUBS	QUARTER	MEMBER GROWTH NET GOAL	MEMBER GROWTH ACTUAL	DROPPED MEMBERS ACTUAL (including transfers)
JULY/AUG/SEPT	17	41	14	JULY/AUG/SEPT	877	2,556	1,489
OCT/NOV/DEC	12	12	23	OCT/NOV/DEC	969	1,615	3,177
JAN/FEB/MAR	13	20	16	JAN/FEB/MAR	898	1,760	1,059
APR/MAY/JUNE	22	12	0	APR/MAY/JUNE	1,134	968	437

GOALS AND ACTUAL NEW CLUBS CUMULATIVE



GOALS AND ACTUAL MEMBERS CUMULATIVE



DROPPED CLUBS: 53

1,193 CLUBS OF 2,007 ADDED 1 OR MORE NEW MEMBERS

GENDER DISTRIBUTION

MALE 23,856 (54.46%)  
FEMALE 19,916 (45.46%)

DROPPED MEMBERS

DECEASED	392
CLUB CANCELLED	381
OTHER	5,365
<b>TOTAL</b>	<b>6,138</b>

[CLICK HERE FOR CUMULATIVE MEMBERSHIP DATA](#)

TOTAL FAMILY UNIT MEMBERS	7,326
FAMILY MEMBERS PAYING HALF DUES	4,026